

MEN'S CLOTHING

JACKET



Cuff



Side pocket



Chest pocket

MT-1305 (Mens' Softshell Jacket)



MATERIAL:

3 Layer Waterproof 10000mm Bonded Fabric, with 270-350gsm in weight and 3000mm in Breathability

- Outer Layer: 94% Polyester, 6% Elastane
- Mid Layer: TPU Waterproof, Breathable & Windproof Membrane
- Inner Layer: 100% Polyester Polar fleece for warmth

STYLE :

- 2 Pockets on the sides, 1 pocket on the chest
- Adjustable cuffs with Velcro tape
- Hem with stoppers for adjustment
- Two colors: Red and black

SIZES:

S	M	L	XL	2XL
38	40	42	44	46



Cuff

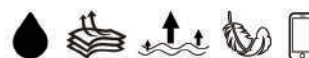


Hem



Chest pocket

MT-1601 (Mens' Softshell Jacket)



MATERIAL:

- 3 Layer Bonded Cationic Fabric with 270-350gsm in weight
- Outer Layer: 94% Polyester, 6% Elastane
- Mid Layer: TPU Membrane with 10000 in Waterproof & 3000 in Breathability
- Inner Layer: 100% Polyester Polar fleece for warmth

STYLE :

- Front Chest closure by Zippers
- 2 Zipped pockets on the sides, and 1 zipped pocket on the chest
- Adjustable Hem with Buckles
- Adjustable Sleeve cuff with Velcro bands

SIZES:

XS	S	M	L	XL
36	38	40	42	44



Cuff



Side pocket



Chest pocket

MT-1602 (Mens' Softshell Jacket)



MATERIAL:

3 Layer Waterproof 10000mm Bonded Fabric, with 270-350gsm in weight and 3000mm in Breathability

- Outer Layer: 94% Polyester, 6% Elastane
- Mid Layer: TPU Waterproof, Breathable & Windproof Membrane
- Inner Layer: 100% Polyester Polar fleece for warmth

STYLE :

- Front Chest closure by Zippers
- 2 pockets on two sides and 1 pocket on chest, as well as 3 inner pockets
- Detachable Hood with Nylon Zipper
- Cuff with Hand Covers, are tightened by Velcro

SIZES:

XS	S	M	L	XL
36	38	40	42	44



Sleeve pocket

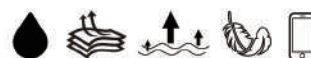


Hem



Chest pocket

MT-1308 (Mens' Softshell Jacket)



MATERIAL:

3 Layer Waterproof 10000mm Bonded Fabric, with 270-350gsm in weight and 3000mm in Breathability"

- Outer Layer: 94% Polyester, 6% Elastane
- Mid Layer: TPU Waterproof, Breathable & Windproof Membrane
- Inner Layer: 100% Polyester Polar fleece for warmth

STYLE :

- Front Chest closure by Zippers
- 2 Zipped pockets on the sides, and 1 zipped pocket on the chest
- Adjustable Hem with Buckles
- Adjustable Sleeve cuff with Velcro bands

SIZES:

XS	S	M	L	XL	XXL
36	38	40	42	44	44

MEN'S CLOTHING JACKET



Cuff



Hem



Side pocket

MT-1338 (Mens' Softshell Jacket)



MATERIAL:

3 Layer Waterproof 10000mm Bonded Fabric, with 270-350gsm in weight and 3000mm in Breathability

- Outer Layer: 94% Polyester, 6% Elastane
- Mid Layer: TPU Waterproof, Breathable & Windproof Membrane
- Inner Layer: 100% Polyester Polar fleece for warmth

STYLE :

- Front Chest closure by Zippers
- 2 Zipped pockets on the sides, and 1 zipped pocket on the chest
- Adjustable Hem with Buckles
- Adjustable Sleeve cuff with Velcro bands

SIZES:

XS	S	M	L	XL
36	38	40	42	44

MEN'S CLOTHING

JACKET



Cuff

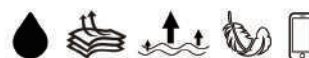


Collar



Chest pocket

MT-1408 (Mens' Softshell Jacket)



MATERIAL:

Outer Jacket: 3 Layer Bonded Fabric, with 320gsm in weight

- Outer Layer: 94% Polyester, 6% Elastane with waterproof
- Mid Layer: TPU Membrane, 10000mm Waterproof and 3000mm Breathable
- Inner Layer: 100% Polyester Polar fleece for warmth

Inner Jacket: 100% Polyester Polar fleece in 300gsm weight

STYLE :

Outer Jacket:

- Front Chest clusur by #5 Nylon Zipper reversed
- 2 pockets on the sides, 1 pocket on the chest
- Adjustable cuffs with Velcro tape
- Hem with stoppers for adjustment

Inner Jacket:

- Polar fleece Jacket with #5 Nylon Zipper on Chest, 2-Pockets on sides

SIZES:

XS	S	M	L	XL	XXL
36	38	40	42	44	44

MEN'S CLOTHING

JACKET



Cuff



Side pocket



Chest pocket

MT-1409 (Mens' Softshell Jacket)



MATERIAL:

3 Layer Waterproof 10000mm Bonded Fabric, with 270-350gsm in weight and 3000mm in Breathability

- Outer Layer: 94% Polyester, 6% Elastane
- Mid Layer: TPU Waterproof, Breathable & Windproof Membrane
- Inner Layer: 100% Polyester Polar fleece for warmth

STYLE :

- Front Chest closure by NO.5 Zipper
- 2 pockets on the sides, 1 pocket on the chest
- Adjustable cuffs with Velcro tape
- Hem with stoppers for adjustment

SIZES:

S	M	L	XL
38	40	42	44

MEN'S CLOTHING

JACKET



Cuff

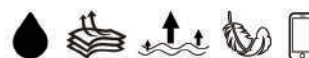


Side pocket



Chest pocket

MT-1410 (Mens' Softshell Jacket)



MATERIAL:

3 Layer Waterproof 10000mm Bonded Fabric, with 270-350gsm in weight and 3000mm in Breathability

- Outer Layer: 94% Polyester, 6% Elastane
- Mid Layer: TPU Waterproof, Breathable & Windproof
- Inner Layer: 100% Polyester Polar fleece for warmth

STYLE :

- Front Chest closure by NO.5 Zipper
- 2 pockets on the sides, 1 pocket on the chest
- Adjustable cuffs with Velcro tape
- Hem with stoppers for adjustment

SIZES:

S	M	L	XL	XXL
38	40	42	44	44

MEN'S CLOTHING

JACKET



Cuff

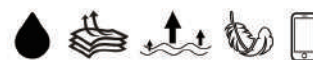


Side pocket



Inside pocket

MT-1820 (Mens' Softshell Jacket)



MATERIAL:

Poly nylon cotton fabric

STYLE :

- Front Chest closure by Zippers
- 2 pockets on the sides, 1 inner pocket
- Rib fabric cuff and hem

SIZES:

XS	S	M	L	XL
36	38	40	42	44

MEN'S CLOTHING

JACKET



Cuff

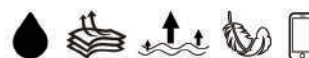


Side pocket



Collar

MT-1606 (Mens' Softshell Jacket)



MATERIAL:

3 Layer Waterproof 10000mm Bonded Fabric, with 270-350gsm in weight and 3000mm in Breathability

- Outer Layer: 94% Polyester, 6% Elastane
- Mid Layer: TPU Waterproof, Breathable & Windproof
- Inner Layer: 100% Polyester fleece

STYLE :

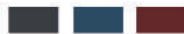
- Front Chest closure by Reversed Contrast Nylon
- 2 pockets on the sides, 2 pockets on the chest
- Adjustable cuffs with Velcro tape
- Hem with stoppers for adjustment
- Black/Grey Color Body, with two reflective strips on the sleeve

SIZES:

S	M	L	XL	XXL
38	40	42	44	46

MEN'S CLOTHING

JACKET



Cuff



Side pocket



Zipper

MT-1904 (Mens' Softshell Jacket)



MATERIAL:

3 Layer Waterproof 10000mm Bonded Fabric, with 270-350gsm in weight and 3000mm in Breathability

- Outer Layer: Knitted Polyester/Spandex
- Mid Layer: TPU Waterproof, Breathable & Windproof Membrane
- Inner Layer: 100% Polyester fleece

STYLE :

- Front Chest closure by Nylon Zipper Reversed
- 2 pockets on the sides
- Embroidery on the chest and back
- Hem with stoppers for adjustment

SIZES:

S	M	L	XL	XXL
38	40	42	44	46

MEN'S CLOTHING

JACKET



Cuff

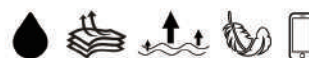


Side pocket



Zipper

MT-2077 (Mens' Softshell Jacket)



MATERIAL:

3 Layer Waterproof 10000mm Bonded Fabric, with 270-350gsm in weight and 3000mm in Breathability

- Outer Layer: 94% Polyester, 6% Elastane
- Mid Layer: TPU Waterproof, Breathable & Windproof Membrane
- Inner Layer: 100% Polyester Polar fleece for warmth

STYLE :

- Front Chest closure by Zippers
- Two Side Pockets with Zipper, One Inner Pocket on chest
- Cuff are tightened by Velcro
- Polar Fleece Lining keep the Body Warmer

SIZES:

XS	S	M	L	XL
36	38	40	42	44

MEN'S CLOTHING

Pants



MP-1724 (Mens' Softshell Pants)



MATERIAL:

3 Layer Waterproof 10000mm Bonded Fabric, with 270-350gsm in weight and 3000mm in Breathability

- Outer Layer: 94% Polyester,6% Elastane
- Mid Layer: TPU Waterproof,Breathable & Windproof Membrane
- Inner Layer: 100% Polyester Polar fleece

STYLE :

- Waist by elasticated
- 2 pockets on the side and 1pocket on back with zipper
- Hem with elastic rope and stoppers for adjustment

SIZES:

Specifica tions	M	L	XL	XXL
Waist	40	42	44	46
Side length	108	110	112	114
Hip measurement	55	57	59.5	62



Waist

Side pocket

Button

MEN'S CLOTHING

Pants



MP-1919 (Mens' Softshell Pants)



MATERIAL:

3 Layer Waterproof 10000mm Bonded Fabric, with 270-350gsm in weight and 3000mm in Breathability

- Outer Layer: 94% Polyester,6% Elastane
- Mid Layer: TPU Waterproof,Breathable & Windproof Membrane
- Inner Layer: 100% Polyester Polar fleece for warmth

STYLE :

- Waist by elasticated
- 2 pockets on the side and 1pocket on thigh with zipper
- Hem with stoppers for adjustment

SIZES:

Specifica tions	M	L	XL	XXL
Waist	40	42	44	46
Side length	108	110	112	114
Hip measurement	55	57	59.5	62



Waist

Side pocket

Leg pocket

MEN'S CLOTHING

Pants



MP-1710 (Mens' Softshell Pants)



MATERIAL:

- Outer Layer: 94% Polyester,6% Elastane

STYLE :

- Waist with adjustable waistband
- 2 pockets on the side, 1pocket on thigh and 1 pocket on back
- Long leg designan can split into short leg

SIZES:

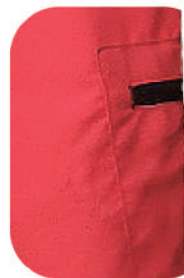
Specifica tions	M	L	XL	XXL
Waist	40	42	44	46
Side lengnth	108	110	112	114
Hip measurement	55	57	59.5	62



Zipper



Detachable



Side pocket